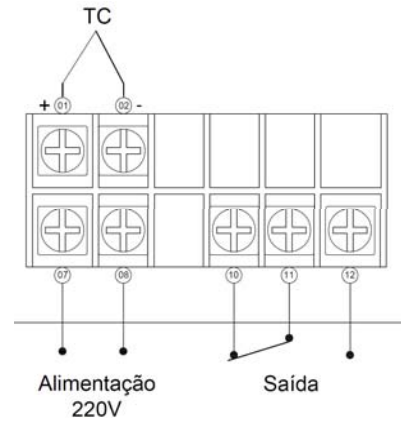


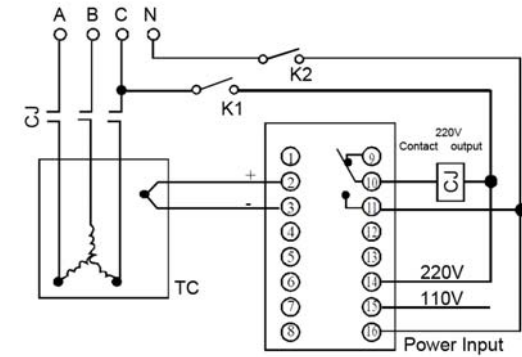
Technical Parameters

Connection Diagram

Model		
	TEH72-9200	TEH96-9200
Rated Voltage	220Vac	
Rated Current	9.2 A	10.7 A
Frequency	50/60 Hz	
Power consumption	2VA	2.35VA
Operating Temperature	0°C a 50°C	
temperature storage	- 10°C a 60°C	
Relative humidity	25 a 85%	
Temperature Accuracy	2%	
Sensor	Thermocouple /"J" thermocouple	
scale	0 to 400°C	
Adjust	Thermal potentiometer (5%)	
Action	On -Off	
Control output (relay)	SPDT 277V-10A / 127V-12A	
Mechanical life (operations)	10 <sup>6</sup>	
Isolation level	50/500 (MΩ/Vcc)	
Isolation Voltage	1500/1 (Vrms/min)	
connections	With screw terminals	
Box case	PC+ABS plastic resin casing	



TEH-72-9200



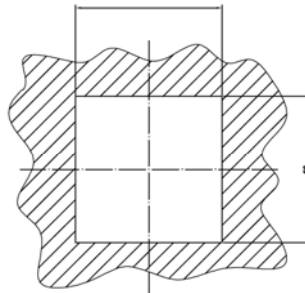
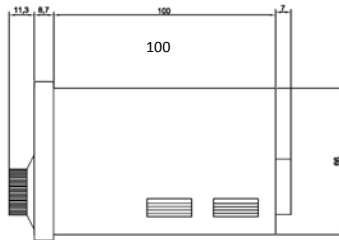
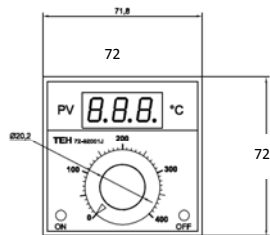
TEH-96-9200

TEH72-92001 intelligent temperature controller latest developed by our factory and design reference adopts MCU and fuzzy control technology with unique appearance small size design, beautiful appearance, high precision, easy for installation & removal, anti-interference capability.

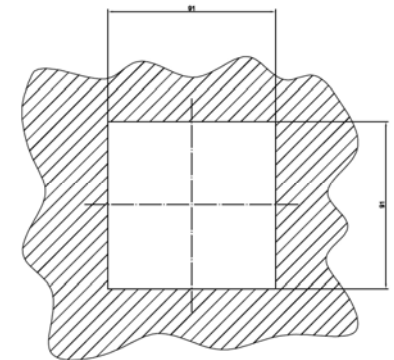
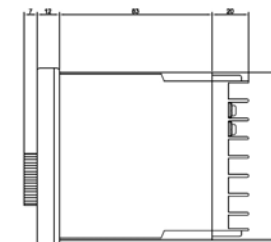
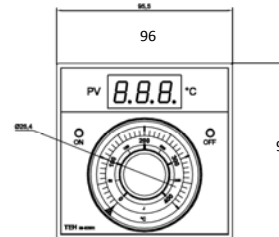
The product were widely used in plastic machinery, food machinery, medical machinery, chemical machinery lines which required temperature measurement and automatic controller by the range of 0 ~ 400 °C.

\*Access our official-site for any information keep posted <http://www.xetra.com.cn> or contact with our representative distributors.

Dimensions



TEH-72-9200



TEH-96-9200