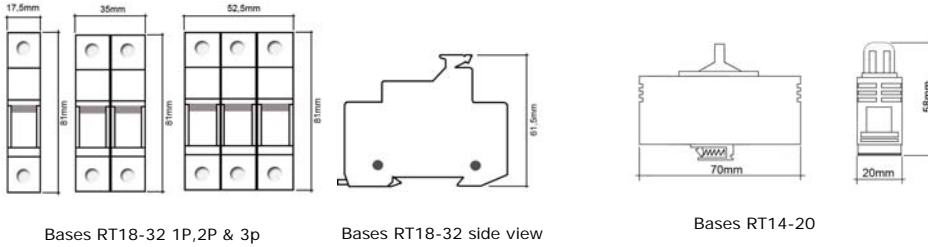




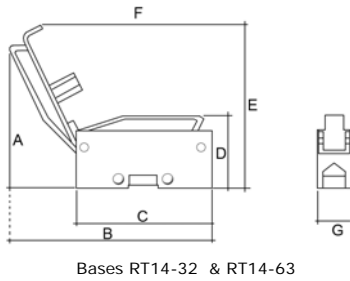
## H.R.C FUSE AND HOLDERS

MODEL	Rated Current			Reference
10*38	2 A	16 A	Fuse Holder RT18-32x	
	4 A	20 A		
	6 A	25 A		
	10 A	32 A		
14*51	20 A	25 A	32 A	RT14-32/RT18-63
22*58	40 A	50 A	63 A	RT14-63

### Dimensions for Holder RT18 and Fuse 10\*38



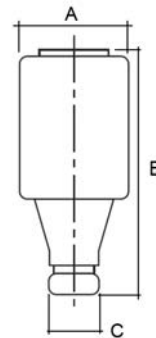
### Dimensions for Holder RT14 and Fuse 14\*51 & 22\*58



Model	A	B	C	D	E	F	G
RT14-32	110	160	115	60	125	140	26
RT14-63	123	196	124	65	143	170	34

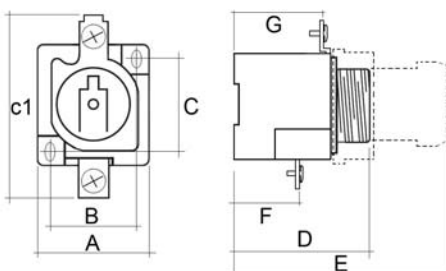
## H.R.C FUSE AND HOLDERS

Nominal Current	Base compatible	Rated Volt(V)	Breaking Capacity(kA)	Dimensions		
				A	B	C
2	RO21	500	50	21	50	6
4				21	50	6
6				21	50	6
10				21	50	8
16				21	50	10
20				21	50	20
25				25	50	13,5
32	RO22	500	50	21	50	15
40				25	50	16
50				26,5	50	17,5
63				27	50	19



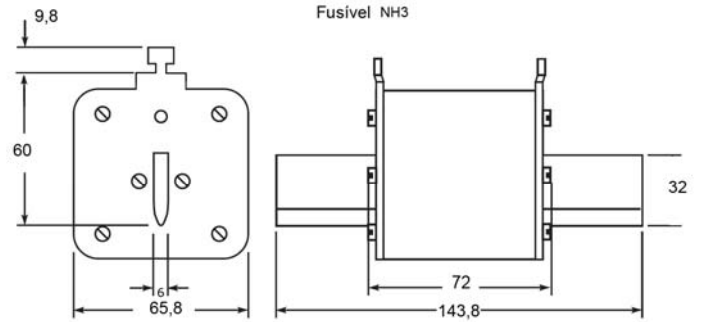
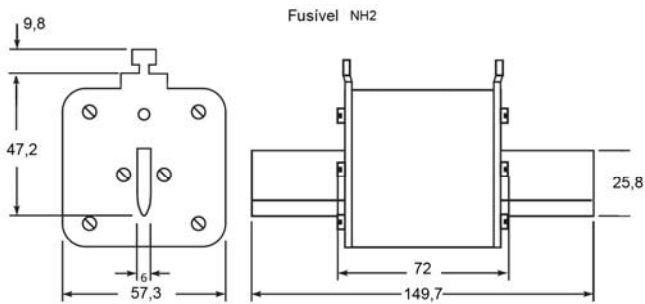
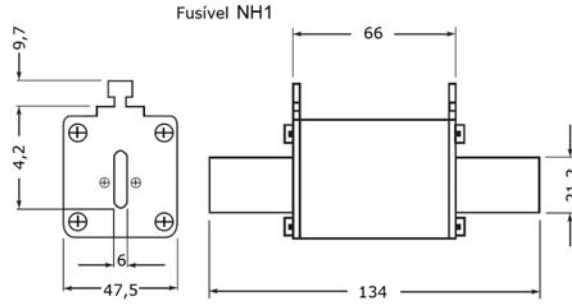
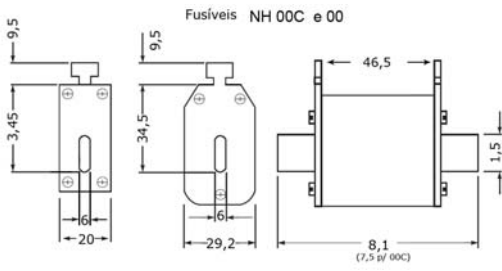
### FUSE BASE

Model	A	B	C	c1	D	E	F	G
RO21	44	26	31	67	41	70	18	24
RO22	54	38	33	86	46	88	27	23

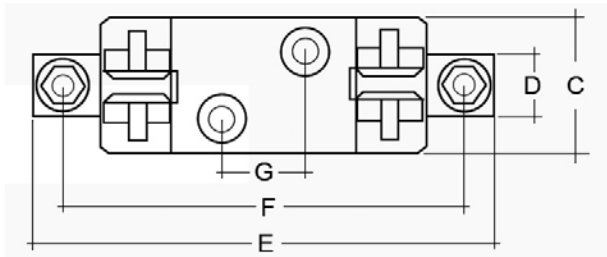
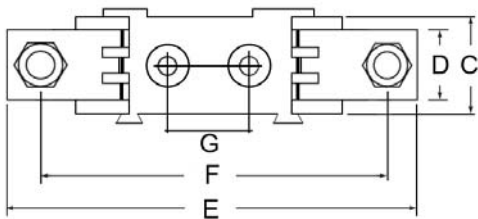
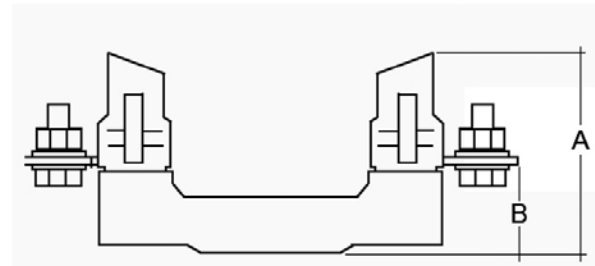
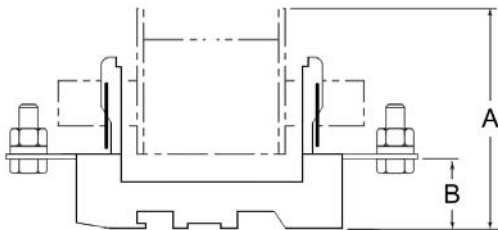


## NH BASE AND FUSE

Model	Voltage (V)	Current nominal (A)	Breaking capacity (kA)
NH00C	500/690	50,63,80,100	120/50
NH00		125,160	
NH01		160,200,250	
NH02		300,315,350,400	
NH03		500,630	



Model	A	B	C	D	E	F	G
NH00/00C	72mm	23mm	32mm	25mm	120,5mm	101mm	26mm
NH1	110mm	35mm	56mm	27mm	196mm	179mm	37mm
NH2	122mm	42mm	61mm	30mm	251mm	212mm	41mm



Base NH00c & 00

Base NH1 & NH2