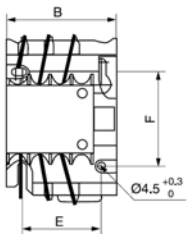


CJ19 Contactor for Power Factor Correction

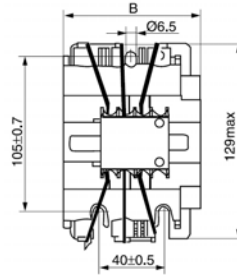
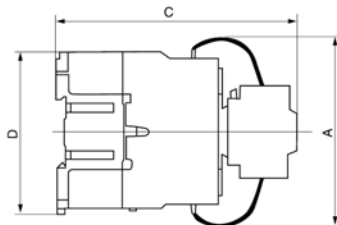


Model	CJ19-25	CJ19-32	CJ19-43	CJ19-63/95
Rated Current (Ie)	17	23	29	43/63
Power of controlled capacitor (kVar)	220/230(Vac)	6	9	10
	380/400(Vac)	12	18	20
Rated Insulation Voltage (Ui)	500V			
Rated Operational Voltage(Ue)	380Vca			
Restrained surge capacity	20Ie			
Operation range	Pick-up: (85%~110%)Us; drop-out: (20%~75%)Us			
Coil power (VA)	Start-up	70	110	110
	Holding	8	11	11
Control capacity of auxiliary contact	AC-15 360VA;DC-13 33W			
Temperatura ambiente	-5°C ~ +40°C			
Vida eléctrica (x10 ³)	100			

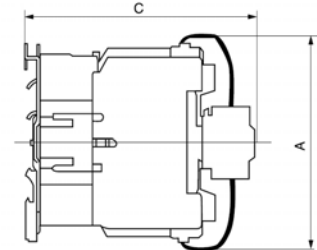
DIMENSIONS



CJ19-25/CJ19-32/CJ19-43



CJ19-63/CJ19-95



Model	A	B	C	D	E	F	Weight
CJ19-25	71mm	47mm	127mm	75mm	36mm	57mm	0.44kgs
CJ19-32	81mm	57mm	130mm	84mm	41mm	59mm	0.63kgs
CJ19-43	81mm	57mm	135mm	84mm	41mm	59mm	0.64kgs
CJ19-63	120mm	76mm	150mm	***	***	***	1.4kgs
CJ19-95	120mm	76mm	150mm	***	***	***	1.5kgs

General

- 1.1 Electric ratings: AC50/60Hz, up to 400V;
- 1.2 Standard: IEC/EN 60947-4-1.

Normal Operation Conditions

- 2.1 Ambient temperature: -5°C~+40°C, the average during 24 hours should not exceed +35°C.
- 2.2 Altitude: ≤ 2000m;
- 2.3 Atmosphere conditions:
- 2.4 Pollution degree: 3
- 2.5 Installation category: III
- 2.6 Installation conditions : the inclination between installation plane and vertical plane is within ±50 °.
- 2.7 Impact and shake: the products should locate in the places where there are no obvious impact and shake.

Wiring and Installation

- 3.1 The connection terminals are protected through insulation cover, which is reliable and secure for installation and operation;
- 6.2 For CJ19-25~43, screws are available for installation, as well as the DIN rail; for CJ19-63~95, 35mm or 75mm standard rail are available for installation.